



## BK10 Series Static Wet Hydraulic Brake

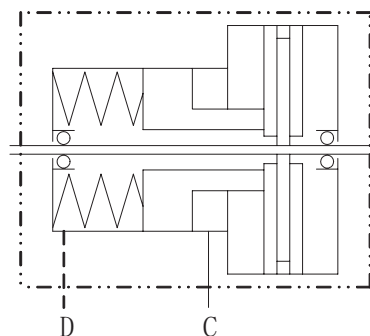
BK10 series static wet hydraulic brake is suitable for lower speed application of scissors type aerial work platform and agricultural machinery and others with wheel mounting. The feature:

- \* The output shaft adopts the same heavy duty roller bearing in front and behind, which is bigger ability on radial load.
- \* It adopts optimized disc brake piece and spring load, for reliable braking and good endurance.
- \* Optimizing piston and loading mechanism, to provide the minimum dimension of wheel connection method.
- \* With double braking release port, in order to discharge the braking cylinder gas or external brake fluid.
- \* Big braking torque, suitable for static braking.

### Main Specification

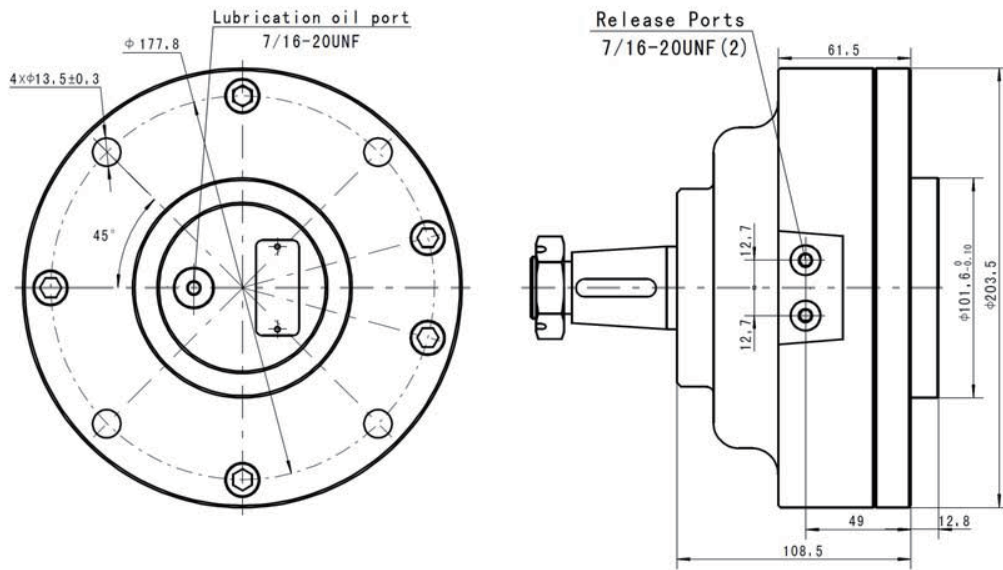
Item	BK10-1	BK10-2
Min. Static Torque [Nm]	1150	1700
Release Pressure [MPa]	2.8	
Max. Release Pressure [MPa]	21	
Max. Speed [rpm]	300	
Release Volume [cm <sup>3</sup> ]	12	
Oil Volume [cm <sup>3</sup> ]	100~120	
Max. Pressure of Lubrication oil port [MPa]	0.05	
Weight [kg]	18	20

### Hydraulic systems



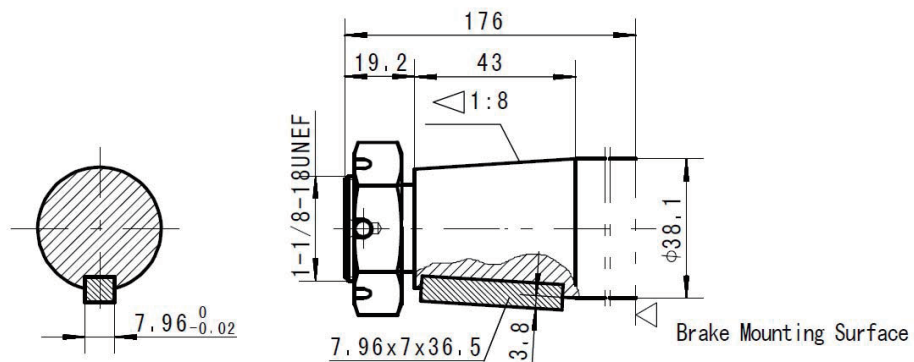
### BK10-1 DIMENSIONS AND MOUNTING DATA

#### S1 Flange and Pilot and Brake Pors

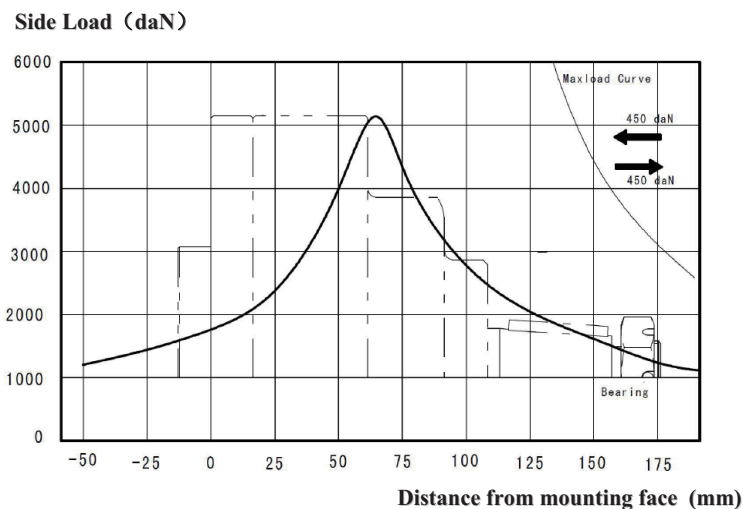


### BK10-1 DIMENSIONS OF SHAFT EXTENTSIONS

#### T31 $\Phi 38.1$ Cone—shaft 1:8



### BK10-1 Mounting Flange Radial Forces



The bearing curve represents allowable bearing loads for an L bearing life at  $12 \times 10^6$  revolutions.  
The maximum load curve is defined by bearing static load capacity This curve should not be exceeded at any time including shock loads.

### Order Information

1  2  3  4  5  6  7  8

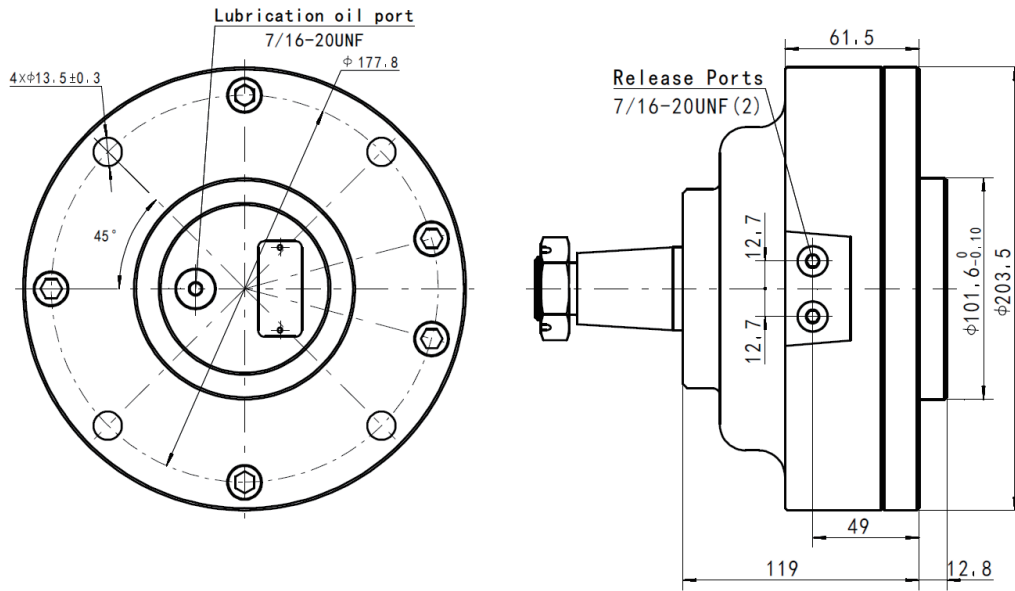
BK10-

Pos.1	2	3	4	5	6	7	8
Code	Brake Torque	Output shaft	Flange and Pilot and Brake Pors	Lubrication Port	Paint	Design Code	Nut Code
1	1150	Ø38.1 Cone-Shaft 1:8. Parallel key 7.96x7x36.5	S1 Round Flange 4x Ø13.5, Ø177.8,Pilot Ø101.6x12.8, Brake Pors 7/16-20UNF	Omit	B S 00 Omit	02 002	N N-Type thick Nut
					Black Silver Grey No paint Blue		

Note: When the table is used, please fill the code of left rows in dash area and give us, which the code information is consists of construction, output shaft, Flange and Pilot and Brake Pors, Lubrication Port etc... If the specification is not in the table or you have specific requirements, please contact us.

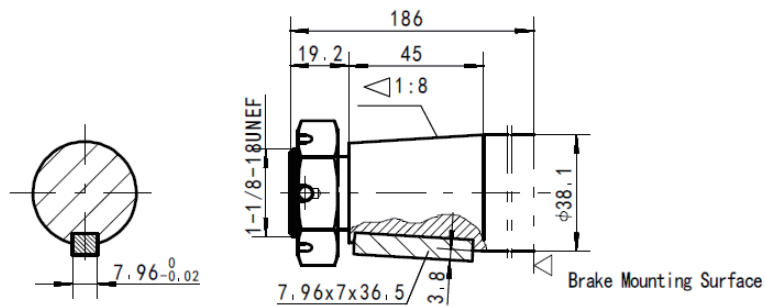
**BK10-2 DIMENSIONS AND MOUNTING DATA**

**S1 Flange and Pilot and Brake Pors**

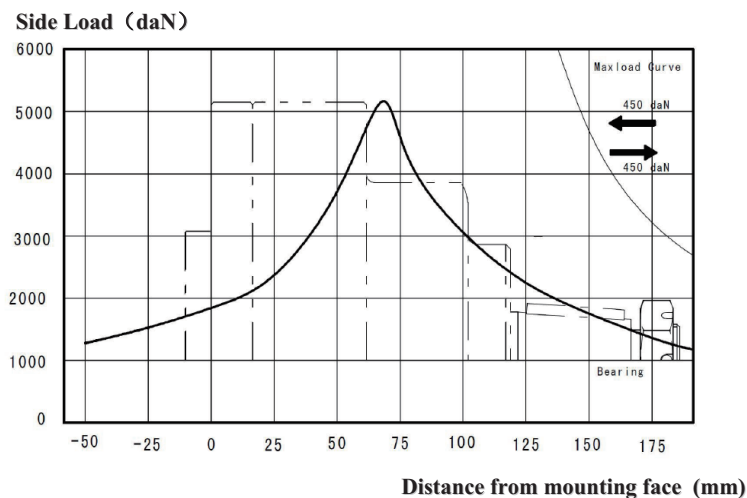


**BK10-2 DIMENSIONS OF SHAFT EXTENTSIONS**

**T31  $\phi 38.1$  Cone—shaft 1:8**



### BK10-2 Mounting Flange Radial Forces



The bearing curve represents allowable bearing loads for an L bearing life at  $12 \times 10^6$  revolutions. The maximum load curve is defined by bearing static load capacity. This curve should not be exceeded at any time including shock loads.

### Order Information

1  2  3  4  5  6  7  8

Pos.1	2	3	4	5	6	7	8
Code	Brake Torque	Output shaft	Flange and Pilot and Brake Ports	Lubrication Port	Paint	Design Code	Nut Code
2	1700	Ø38.1 Cone-Shaft 1:8. Parallel key 7.96x7x36.5	S1 Round Flange 4x Ø13.5, Ø177.8, Pilot Ø101.6x12.8, Brake Ports 7/16-20UNF	Omit 7/16-20UNF	B Black S Silver Grey 00 No paint Omit Blue	02 002	N N-Type thick Nut

Note: When the table is used, please fill the code of left rows in dash area and give us, which the code information is consists of construction, output shaft, Flange and Pilot and Brake Ports, Lubrication Port etc.. If the specification is not in the table or you have specific requirements, please contact us.

# 专业做液压-专注做精品

PROFESSIONAL ON HYDRAULIC- FOCUS ON HIGH QUALITY



## 石家庄寒九科技有限公司

地址：中国河北石家庄友谊北大街398号

电话：+86 ( 311 ) 68123061

传真：+86 ( 10 ) - 80115555-568844

邮编：050000

网址：www.hjhydraulic.com

邮箱：manager@sjzhjism.com

## SHIJIAZHUANG HANJIU TECHNOLOGY CO.,LTD.

Add: No. 398 Youyi Street, Shijiazhuang, Hebei, China

Tel: +86 (311) 68123061

Fax: +86 (10) - 80115555-568844

Post code: 050000

Web: www.hjhydraulic.com

Email: manager@sjzhjism.com